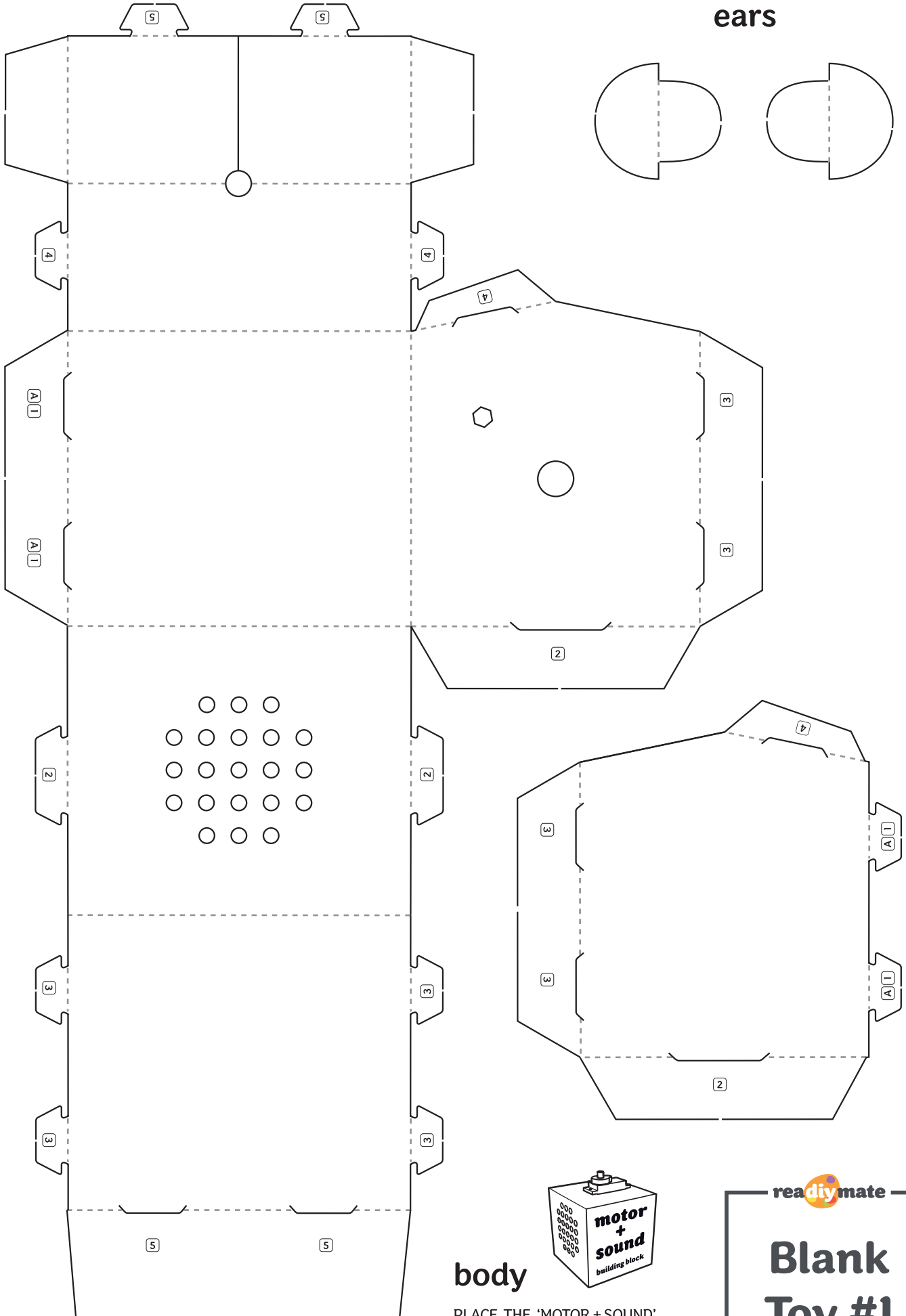
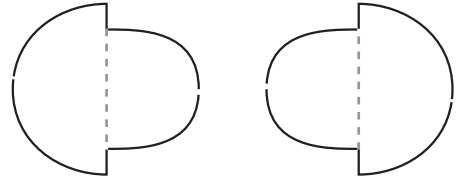


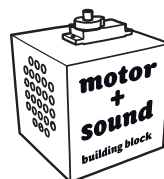


Except where otherwise noted, this work is licensed under <http://creativecommons.org/licenses/by-nc/3.0/>

ears



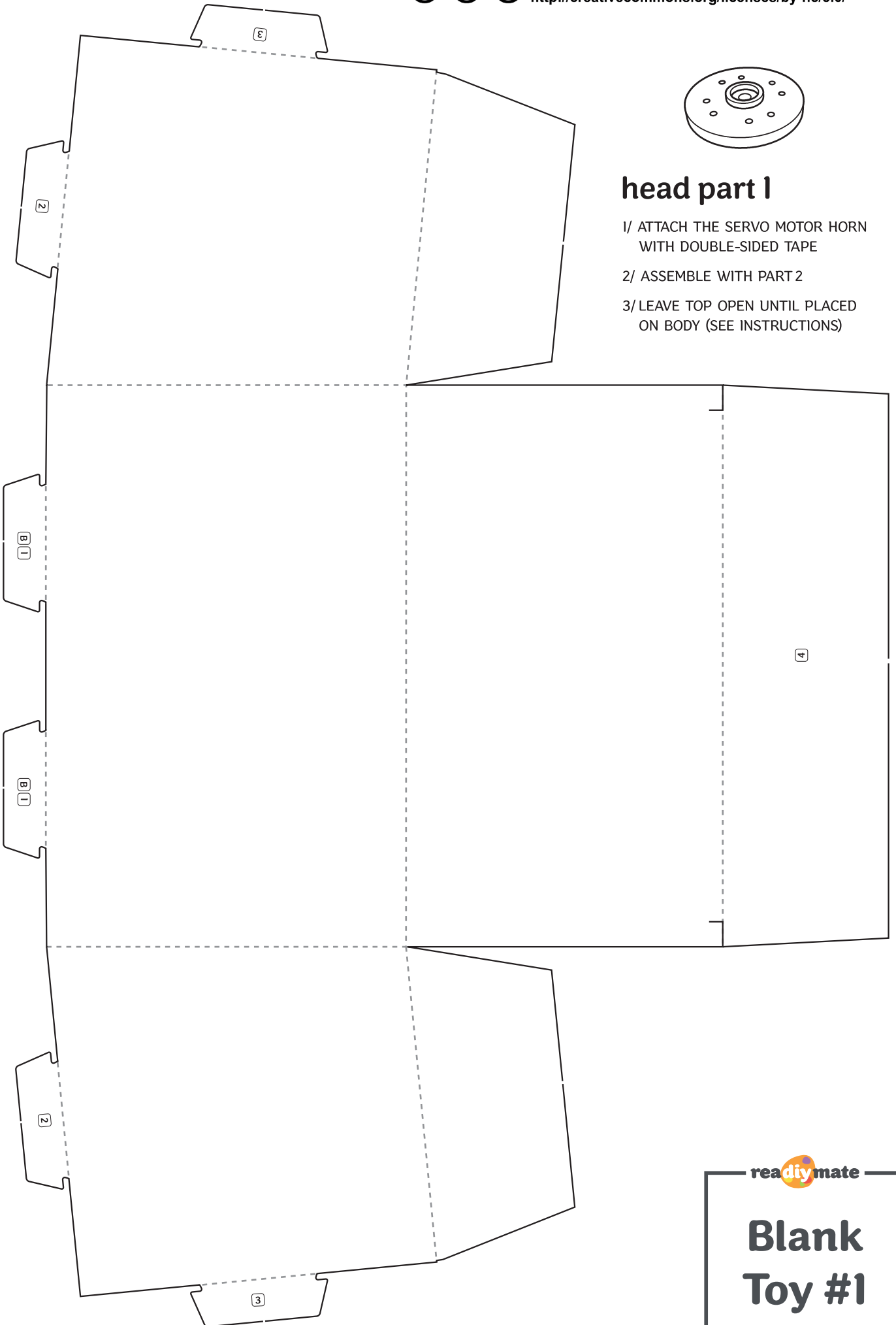
body



PLACE THE 'MOTOR + SOUND'
BUILDING BLOCK INSIDE
BEFORE CLOSING SHAPE

ready **mate**

Blank Toy #1

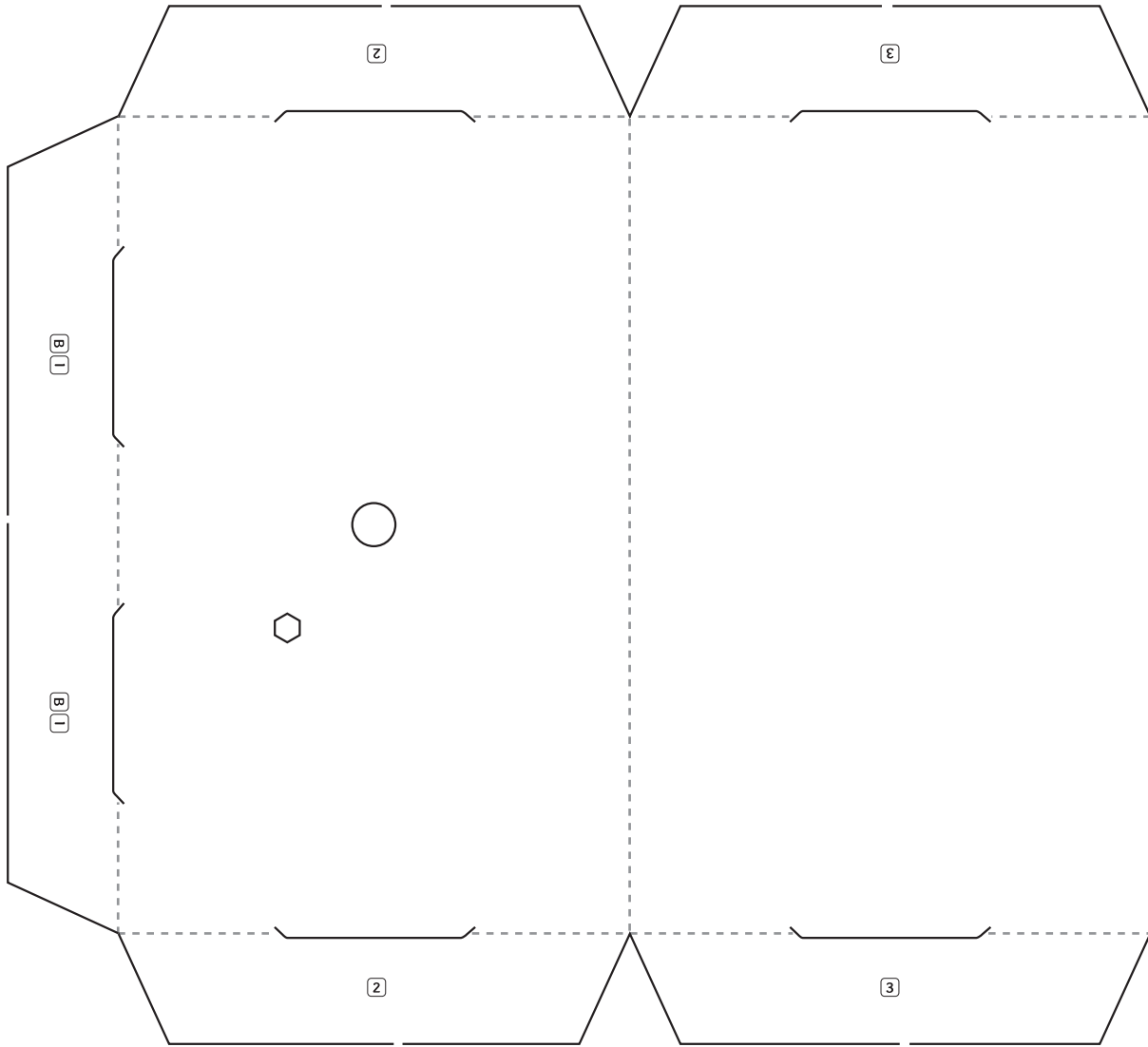


head part I

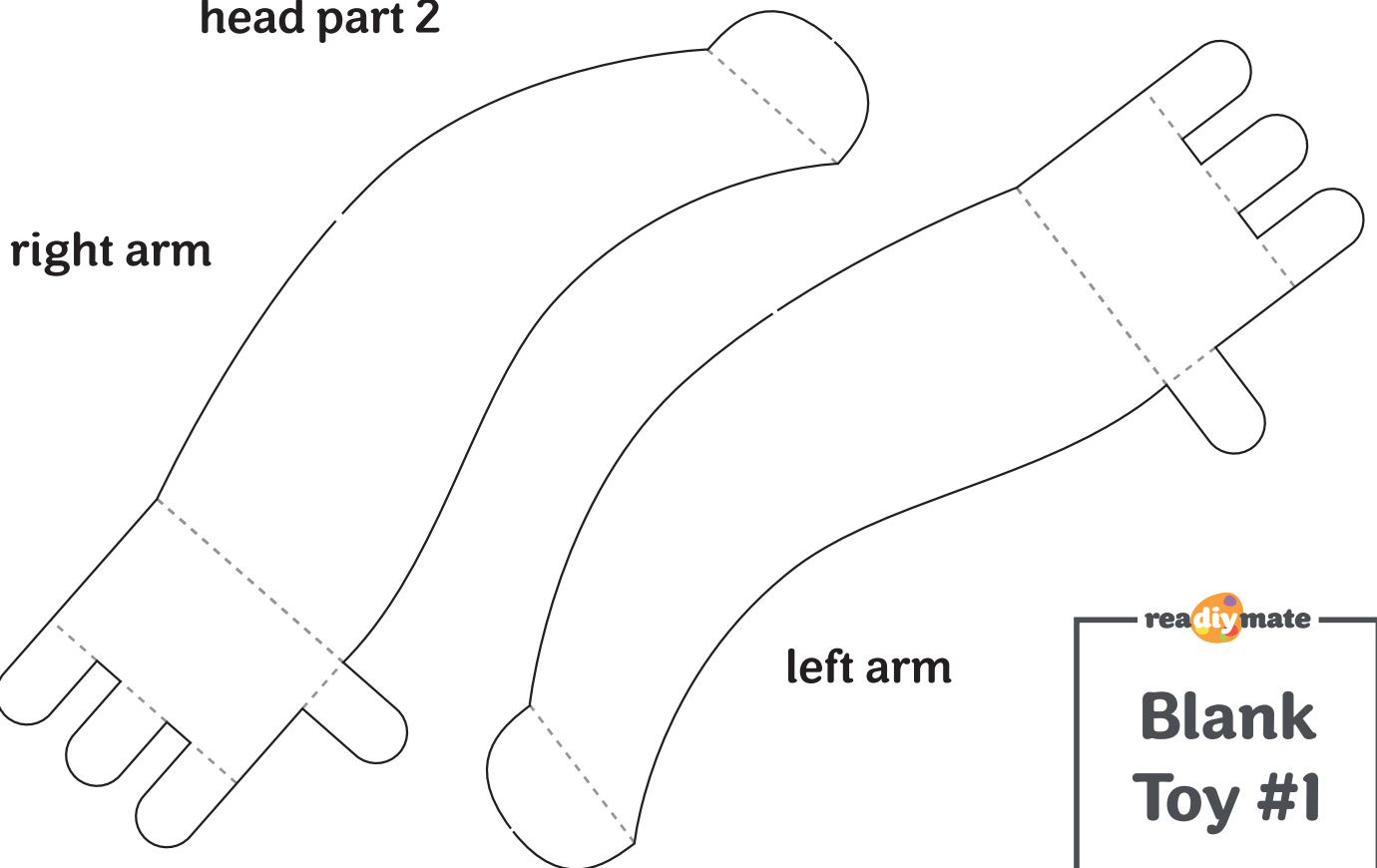
- 1/ ATTACH THE SERVO MOTOR HORN WITH DOUBLE-SIDED TAPE
- 2/ ASSEMBLE WITH PART 2
- 3/ LEAVE TOP OPEN UNTIL PLACED ON BODY (SEE INSTRUCTIONS)

readymate

Blank Toy #1



head part 2



right arm

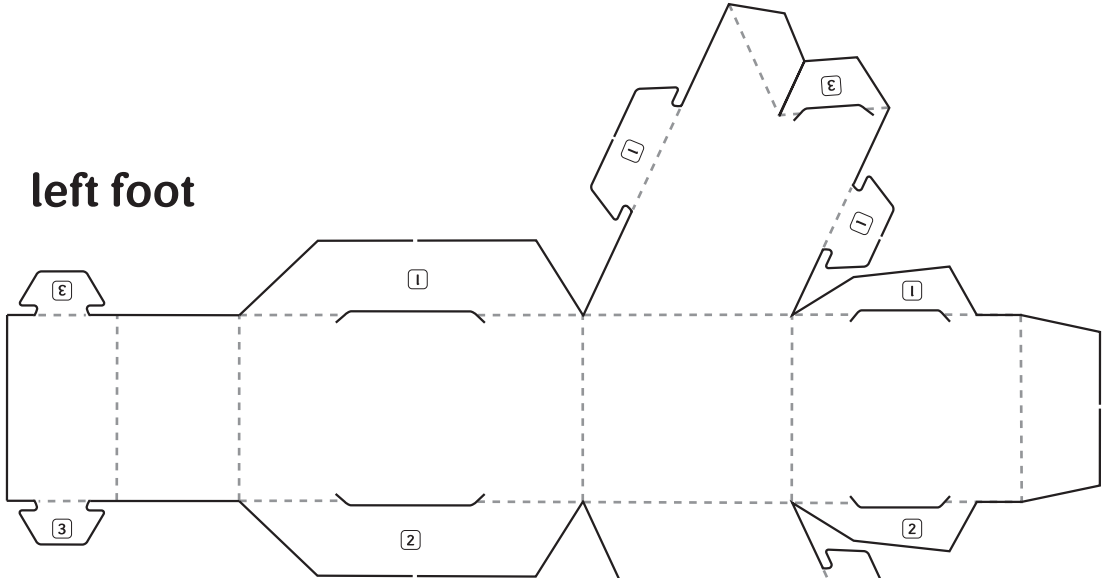
left arm

readymate

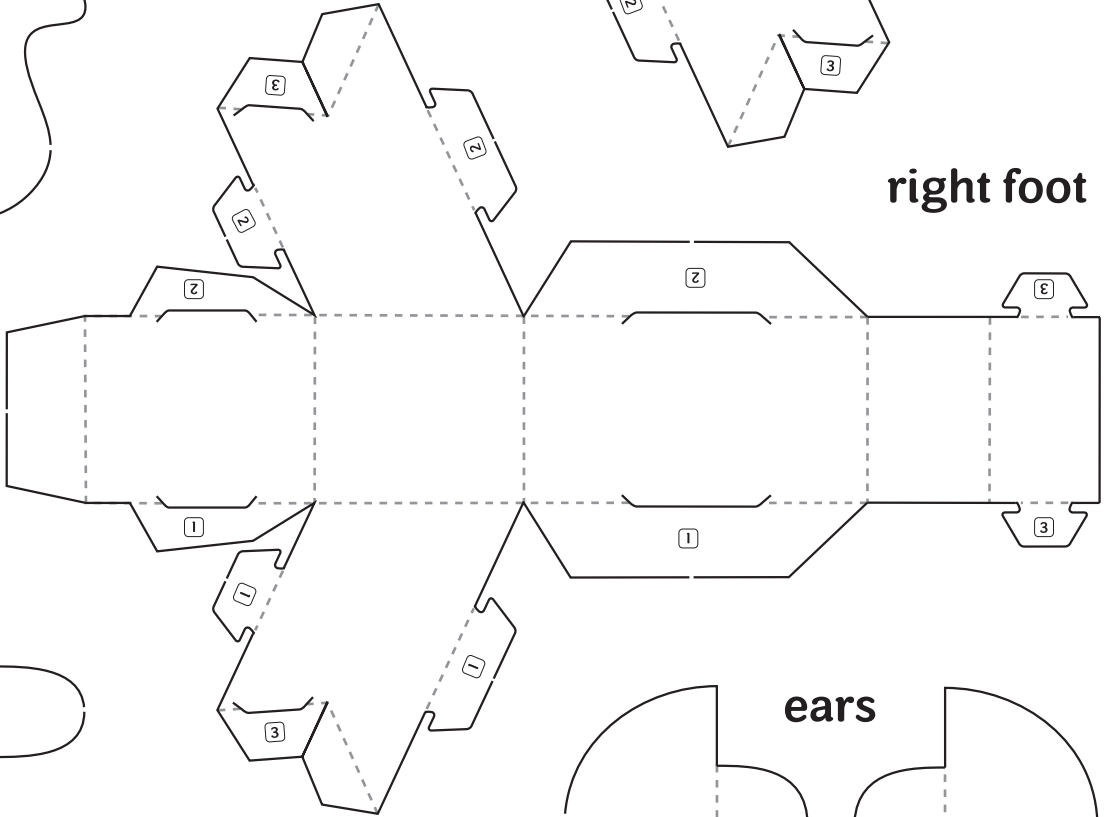
**Blank
Toy #1**



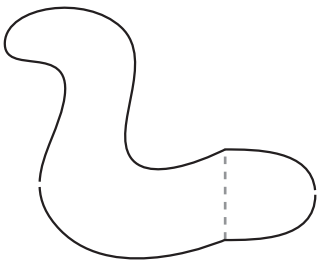
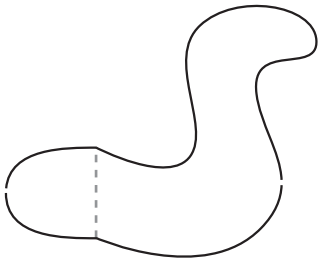
left foot



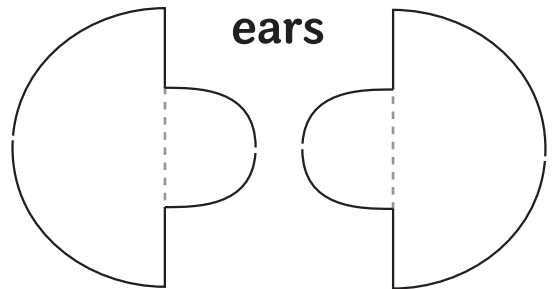
right foot



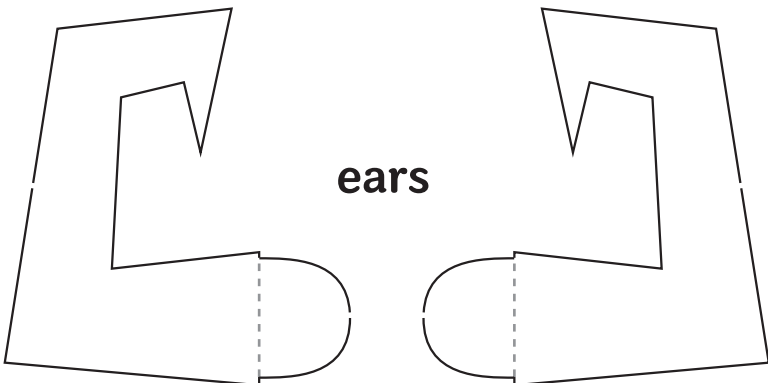
ears



ears



ears



readymate

**Blank
Toy #1**